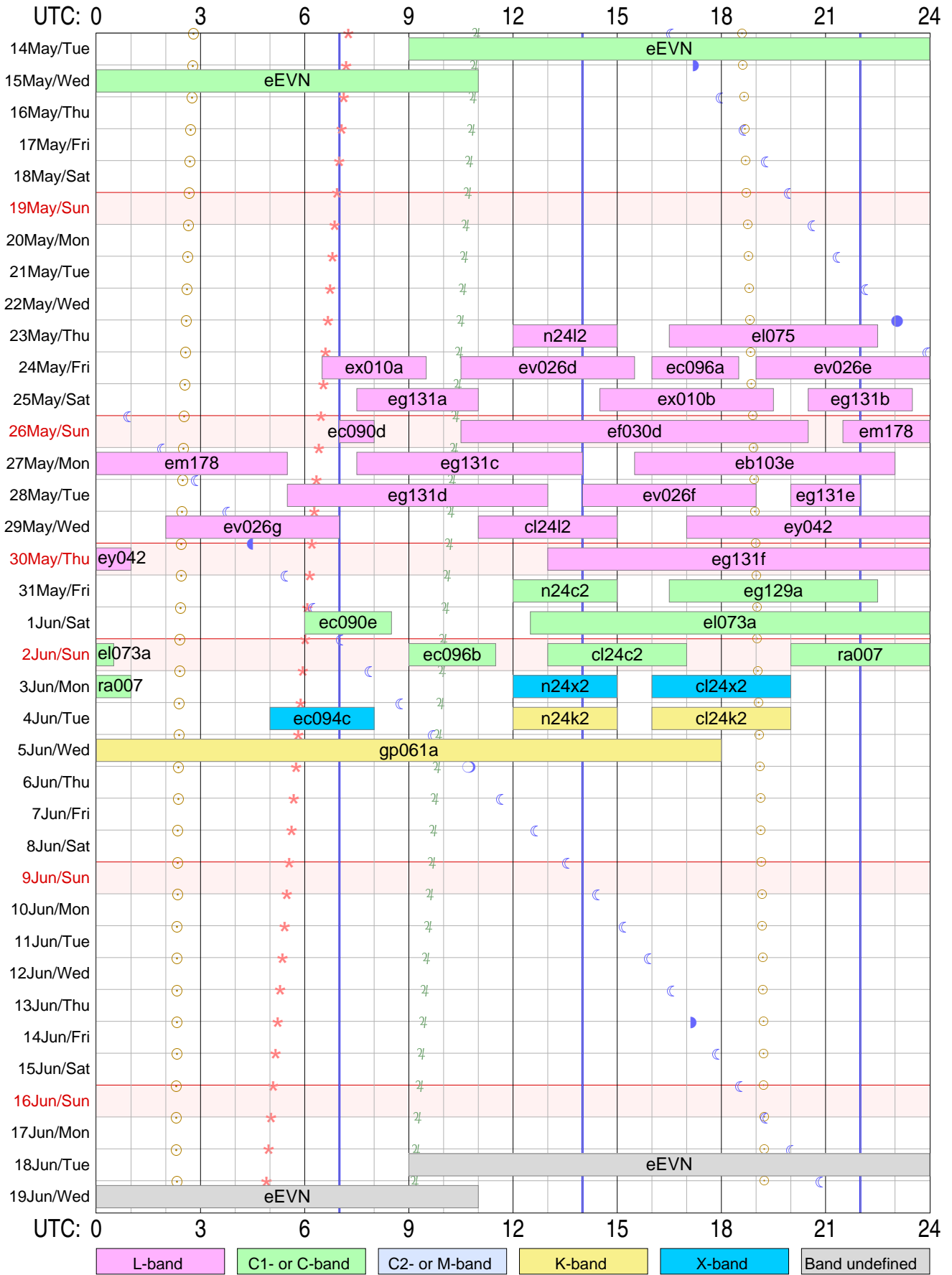


Tr VLBI plan for May/June 2024



Strona zostawiona celowo pusta

EVN Experiments

May 2024

Uytownik ftp dla logw i schedulw RA: grt

ftp://webinet.asc.rssi.ru

Przykad dla log files: cd GRT_log_files/2014_09/2014_09_01_raks08ak

Przykad dla sched files: cd schedule/grtsched/RAKS/rk08ak

Year = 2024, 2nd line is:	Year	Date	UTstart	UTstop	Exper.	xxComment
Nr	D	M	<=Dur	Exper.	name	Comment
1	14.05	26.0	eEVN			C
2	23.05	3.0	n24l2			L
3	23.05	6.0	e1075			L
4	24.05	3.0	ex010a			L
5	24.05	5.0	ev026d			L
6	24.05	2.5	ec096a			L
7	24.05	5.0	ev026e			L
8	25.05	3.5	eg131a			L
9	25.05	5.0	ex010b			L
10	25.05	3.0	eg131b			L
11	26.05	1.0	ec090d			L
12	26.05	10.0	ef030d			L
13	26.05	2.5	em178			L
14	27.05	6.5	eg131c			L
15	27.05	7.5	eb103e			L
16	28.05	7.5	eg131d			L
17	28.05	5.0	ev026f			L
18	28.05	2.0	eg131e			L
19	29.05	5.0	ev026g			L
20	29.05	4.0	cl24l2			L
21	29.05	7.0	ey042			L
22	30.05	11.0	eg131f			L
23	31.05	3.0	n24c2			C
24	31.05	6.0	eg129a			C
25	1.06	2.5	ec090e			C
26	1.06	11.5	e1073a			C
27	2.06	2.5	ec096b			C
28	2.06	4.0	cl24c2			C
29	2.06	4.0	ra007			C
30	3.06	3.0	n24x2			X
31	3.06	4.0	cl24x2			X
32	4.06	3.0	ec094c			X
33	4.06	3.0	n24k2			K
34	4.06	4.0	cl24k2			K
35	5.06	18.0	gp061a			K
36	18.06	26.0	eEVN			

Summer time (DST): Mar 31 to Oct 27, 2024

Total observing time: 233.5 hours in 36 experiments

Done! See output file: may24.txt.ps

Plik pdf tego dokumentu jest dost/epny w sieci pod adresem:

<http://paulo.astro.uni.torun.pl/~pw/VLBI/schedules/may24.pdf>

em165dtr

E-EVN: EM165D

PI: Marcote

Address: JIVE

Observing mode: realtime e-vlbi

Schedule for TORUN (Code Tr)

Page 2

e-EVN: EM165D

UP: D => Below limits; H => Below horizon mask; W => still slewing at end; blank => Up.

Early: Seconds between end of slew and start. Dwell: On source seconds.

Disk: GBytes recorded to this point.

TPStart: Recording start time. Frequencies are LO sum (band edge).

SYNC: Time correlator is expected to sync up.

Start UT	Source	Start / Stop					Early	Disk	TPStart		
Stop UT		LST	EL	AZ	HA	UP	ParA	Dwell	GBytes	SYNC	

--- Tue 14 May 2024 Day 135 ---											
----- CLOCK-SEARCH -----											
Next scan frequencies:		4830.49	4830.49	4830.49	4830.49	4830.49	4830.49	4894.49	4894.49	4894.49	4894.49
		4958.49	4958.49	4958.49	4958.49	4958.49	4958.49	5022.49	5022.49	5022.49	5022.49
Next BBC frequencies:		630.49	630.49	630.49	630.49	630.49	630.49	694.49	694.49	694.49	694.49
		758.49	758.49	758.49	758.49	758.49	758.49	822.49	822.49	822.49	822.49
Next scan bandwidths:		32.00	32.00	32.00	32.00	32.00	32.00	32.00	32.00	32.00	32.00
		32.00	32.00	32.00	32.00	32.00	32.00	32.00	32.00	32.00	32.00

12 00 00	J0555+3948	04 45 09	71.9	130.0	-1.2		-36.8	0	0	12 00 00	
12 05 00	=0552+398	04 50 10	72.5	132.6	-1.1		-35.1	300	77	12 00 01	

12 07 00	J0555+3948	04 52 10	72.7	133.7	-1.1		-34.4	112	77	12 07 00	
12 20 00	=0552+398	05 05 12	74.0	141.1	-0.9		-29.4	780	278	12 07 01	

12 22 00	J0555+3948	05 07 12	74.2	142.3	-0.8		-28.6	112	278	12 22 00	
12 35 00	=0552+398	05 20 14	75.3	150.9	-0.6		-22.3	780	479	12 22 01	

12 37 00	J0555+3948	05 22 15	75.4	152.3	-0.6		-21.3	112	479	12 37 00	
12 50 00	=0552+398	05 35 17	76.2	162.1	-0.4		-13.9	780	680	12 37 01	

12 52 00	J0555+3948	05 37 17	76.3	163.7	-0.3		-12.7	112	680	12 52 00	
13 05 00	=0552+398	05 50 19	76.7	174.3	-0.1		-4.5	780	881	12 52 01	

13 07 00	J0854+2006	05 52 20	41.7	115.1	-3.1		-35.4	-25	881	13 07 00	
13 20 00	=0J287	06 05 22	43.5	118.5	-2.8		-34.2	755	1082	13 07 01	

13 22 00	J0854+2006	06 07 22	43.8	119.1	-2.8		-34.0	113	1082	13 22 00	
13 35 00	=0J287	06 20 24	45.4	122.7	-2.6		-32.5	780	1283	13 22 01	

13 37 00	J0854+2006	06 22 25	45.7	123.2	-2.6		-32.3	113	1283	13 37 00	
13 50 00	=0J287	06 35 27	47.3	127.0	-2.3		-30.7	780	1484	13 37 01	

13 52 00	J0854+2006	06 37 27	47.5	127.6	-2.3		-30.4	113	1484	13 52 00	
14 05 00	=0J287	06 50 29	49.0	131.6	-2.1		-28.5	780	1685	13 52 01	

14 07 00	J0854+2006	06 52 30	49.3	132.3	-2.1		-28.2	113	1685	14 07 00	
14 20 00	=0J287	07 05 32	50.7	136.5	-1.8		-26.1	780	1886	14 07 01	

14 22 00	J0854+2006	07 07 32	50.9	137.2	-1.8		-25.7	113	1886	14 22 00	
14 35 00	=0J287	07 20 34	52.1	141.7	-1.6		-23.4	780	2087	14 22 01	

Schedule for TORUN (Code Tr)

Page 3

e-EVN: EM165D

UP: D => Below limits; H => Below horizon mask; W => still slewing at end; blank => Up.

Early: Seconds between end of slew and start. Dwell: On source seconds.

Disk: GBytes recorded to this point.

TPStart: Recording start time. Frequencies are L0 sum (band edge).

SYNC: Time correlator is expected to sync up.

Start UT	Source	Start / Stop					Early	Disk	TPStart	
Stop UT		LST	EL	AZ	HA	UP	ParA	Dwell	GBytes	SYNC

--- Tue 14 May 2024 Day 135 ---										
14 37 00	J0854+2006	07 22 34	52.3	142.4	-1.6		-23.0	113	2087	14 37 00
14 50 00	=0J287	07 35 37	53.5	147.1	-1.3		-20.3	780	2288	14 37 01
14 52 00	J0854+2006	07 37 37	53.6	147.8	-1.3		-19.9	113	2288	14 52 00
15 05 00	=0J287	07 50 39	54.6	152.8	-1.1		-17.0	780	2489	14 52 01
15 07 00	J0927+3902	07 52 39	68.3	121.1	-1.6		-41.4	41	2489	15 07 00
15 20 00	=4C39.25	08 05 42	70.0	126.6	-1.4		-38.3	780	2690	15 07 01
15 22 00	J0927+3902	08 07 42	70.2	127.5	-1.3		-37.8	113	2690	15 22 00
15 35 00	=4C39.25	08 20 44	71.7	133.8	-1.1		-33.9	780	2891	15 22 01
15 37 00	J0927+3902	08 22 44	71.9	134.8	-1.1		-33.2	112	2891	15 37 00
15 50 00	=4C39.25	08 35 46	73.2	142.1	-0.9		-28.3	780	3092	15 37 01
15 52 00	J0927+3902	08 37 47	73.4	143.3	-0.8		-27.5	112	3092	15 52 00
16 00 00	=4C39.25	08 45 48	74.1	148.3	-0.7		-23.9	480	3215	15 52 01
----- GAP -----										
16 10 00	J0927+3902	08 55 50	74.8	155.1	-0.5		-19.0	590	3215	16 10 00
16 15 00	=4C39.25	09 00 51	75.1	158.6	-0.5		-16.3	300	3293	16 10 01
16 17 00	J1224+2122	09 02 51	40.0	109.3	-3.4		-37.4	-25	3293	16 17 00
16 30 00	=1222+216	09 15 53	41.9	112.5	-3.2		-36.5	755	3494	16 17 01
16 32 00	J1224+2122	09 17 53	42.1	113.0	-3.1		-36.4	114	3494	16 32 00
16 45 00	=1222+216	09 30 56	43.9	116.4	-2.9		-35.2	780	3695	16 32 01
16 47 00	J1224+2122	09 32 56	44.2	116.9	-2.9		-35.1	113	3695	16 47 00
17 00 00	=1222+216	09 45 58	45.9	120.5	-2.7		-33.7	780	3895	16 47 01
17 02 00	J1224+2122	09 47 58	46.2	121.0	-2.6		-33.5	113	3895	17 02 00
17 15 00	=1222+216	10 01 00	47.8	124.8	-2.4		-31.9	780	4096	17 02 01
17 17 00	J1224+2122	10 03 01	48.1	125.4	-2.4		-31.7	113	4096	17 17 00
17 30 00	=1222+216	10 16 03	49.6	129.3	-2.2		-29.9	780	4297	17 17 01
17 32 00	J1224+2122	10 18 03	49.8	130.0	-2.1		-29.6	113	4297	17 32 00
17 45 00	=1222+216	10 31 05	51.3	134.2	-1.9		-27.5	780	4498	17 32 01
17 47 00	J1224+2122	10 33 06	51.5	134.8	-1.9		-27.2	113	4498	17 47 00
18 00 00	=1222+216	10 46 08	52.8	139.3	-1.7		-24.8	780	4699	17 47 01
18 02 00	J1224+2122	10 48 08	53.0	140.0	-1.6		-24.5	113	4699	18 02 00
18 15 00	=1222+216	11 01 10	54.2	144.7	-1.4		-21.9	780	4900	18 02 01

Schedule for TORUN (Code Tr)

Page 4

e-EVN: EM165D

UP: D => Below limits; H => Below horizon mask; W => still slewing at end; blank => Up.

Early: Seconds between end of slew and start. Dwell: On source seconds.

Disk: GBytes recorded to this point.

TPStart: Recording start time. Frequencies are L0 sum (band edge).

SYNC: Time correlator is expected to sync up.

Start UT	Source	Start / Stop					Early	Disk	TPStart	
Stop UT		LST	EL	AZ	HA	UP	ParA	Dwell	GBytes	SYNC

--- Tue 14 May 2024 Day 135 ---										
18 17 00	J1224+2122	11 03 11	54.4	145.4	-1.4		-21.4	113	4900	18 17 00
18 30 00	=1222+216	11 16 13	55.4	150.4	-1.2		-18.5	780	5101	18 17 01
18 32 00	J1224+2122	11 18 13	55.6	151.2	-1.1		-18.1	113	5101	18 32 00
18 45 00	=1222+216	11 31 15	56.5	156.4	-0.9		-14.9	780	5302	18 32 01
18 47 00	J1224+2122	11 33 16	56.6	157.2	-0.9		-14.4	113	5302	18 47 00
19 00 00	=1222+216	11 46 18	57.2	162.7	-0.7		-11.1	780	5503	18 47 01
19 02 00	J1224+2122	11 48 18	57.3	163.5	-0.6		-10.5	113	5503	19 02 00
19 15 00	=1222+216	12 01 20	57.8	169.1	-0.4		-7.0	780	5704	19 02 01
19 17 00	J1613+3412	12 03 20	42.5	87.3	-4.2		-46.5	-58	5704	19 17 00
19 30 00	=1611+343	12 16 23	44.5	89.9	-4.0		-46.5	722	5905	19 17 01
19 32 00	J1613+3412	12 18 23	44.8	90.3	-3.9		-46.5	114	5905	19 32 00
19 45 00	=1611+343	12 31 25	46.7	92.9	-3.7		-46.4	780	6106	19 32 01
19 47 00	J1613+3412	12 33 25	47.0	93.3	-3.7		-46.4	114	6106	19 47 00
20 00 00	=1611+343	12 46 28	49.0	96.1	-3.5		-46.2	780	6307	19 47 01
20 02 00	J1613+3412	12 48 28	49.3	96.6	-3.4		-46.1	114	6307	20 02 00
20 15 00	=1611+343	13 01 30	51.2	99.5	-3.2		-45.7	780	6508	20 02 01
20 17 00	J1613+3412	13 03 30	51.5	100.0	-3.2		-45.6	114	6508	20 17 00
20 30 00	=1611+343	13 16 32	53.4	103.1	-3.0		-45.0	780	6709	20 17 01
20 32 00	J1613+3412	13 18 33	53.7	103.6	-2.9		-44.9	114	6709	20 32 00
20 45 00	=1611+343	13 31 35	55.6	106.9	-2.7		-44.0	780	6910	20 32 01
20 47 00	J1613+3412	13 33 35	55.9	107.4	-2.7		-43.8	113	6910	20 47 00
21 00 00	=1611+343	13 46 37	57.8	111.0	-2.5		-42.6	780	7111	20 47 01
21 02 00	J1613+3412	13 48 38	58.0	111.6	-2.4		-42.4	113	7111	21 02 00
21 15 00	=1611+343	14 01 40	59.8	115.5	-2.2		-40.9	780	7312	21 02 01
----- EM165D -----										
21 25 00	J1613+3412	14 11 42	61.2	118.7	-2.0		-39.5	592	7312	21 25 00
21 29 00	=1611+343	14 15 42	61.7	120.1	-2.0		-38.9	240	7374	21 25 01
21 31 30	J1751+0939	14 18 13	29.0	114.8	-3.6		-33.6	13	7374	21 31 30
21 35 30	=1749+096	14 22 13	29.6	115.8	-3.5		-33.3	240	7435	21 31 31

Schedule for TORUN (Code Tr)

Page 5

e-EVN: EM165D

UP: D => Below limits; H => Below horizon mask; W => still slewing at end; blank => Up.

Early: Seconds between end of slew and start. Dwell: On source seconds.

Disk: GBytes recorded to this point.

TPStart: Recording start time. Frequencies are L0 sum (band edge).

SYNC: Time correlator is expected to sync up.

Start UT	Source	Start / Stop					Early	Disk	TPStart	
Stop UT		LST	EL	AZ	HA	UP	ParA	Dwell	GBytes	SYNC

--- Tue 14 May 2024 Day 135 ---										
21 37 10	J1825-0737	14 23 54	10.6	118.3	-4.1		-32.2	15	7435	21 37 10
21 38 10	=1822-076	14 24 54	10.8	118.6	-4.0		-32.1	60	7451	21 37 11
21 38 10	HESSJ1832	14 24 54	8.4	118.0	-4.2		-32.5	-23	7451	No stop
21 40 10	---	14 26 54	8.6	118.4	-4.1		-32.4	97	7482	21 38 11
21 40 40	J1835-1115	14 27 24	6.8	119.0	-4.2		-32.4	9	7482	21 40 40
21 41 40	=1832-113	14 28 24	6.9	119.2	-4.1		-32.3	60	7497	21 40 41
21 41 40	HESSJ1832	14 28 24	8.8	118.7	-4.1		-32.3	-21	7497	No stop
21 43 40	---	14 30 25	9.1	119.2	-4.1		-32.1	99	7528	21 41 41
21 44 10	J1825-0737	14 30 55	11.6	119.8	-3.9		-31.7	7	7528	21 44 10
21 45 10	=1822-076	14 31 55	11.7	120.1	-3.9		-31.6	60	7544	21 44 11
21 45 10	HESSJ1832	14 31 55	9.3	119.5	-4.0		-32.0	-23	7544	No stop
21 47 10	---	14 33 55	9.6	119.9	-4.0		-31.8	97	7575	21 45 11
21 47 40	J1835-1115	14 34 25	7.7	120.5	-4.0		-31.9	9	7575	21 47 40
21 48 40	=1832-113	14 35 25	7.8	120.7	-4.0		-31.8	60	7590	21 47 41
21 48 40	HESSJ1832	14 35 25	9.7	120.2	-4.0		-31.7	-21	7590	No stop
21 50 40	---	14 37 26	10.0	120.6	-3.9		-31.6	99	7621	21 48 41
21 51 10	J1825-0737	14 37 56	12.5	121.4	-3.8		-31.2	7	7621	21 51 10
21 52 10	=1822-076	14 38 56	12.6	121.6	-3.8		-31.1	60	7636	21 51 11
21 52 10	HESSJ1832	14 38 56	10.2	121.0	-3.9		-31.5	-23	7636	No stop
21 54 10	---	14 40 56	10.5	121.4	-3.9		-31.3	97	7667	21 52 11
21 54 40	J1835-1115	14 41 26	8.6	121.9	-3.9		-31.3	9	7667	21 54 40
21 55 40	=1832-113	14 42 27	8.7	122.2	-3.9		-31.2	60	7683	21 54 41
21 55 40	HESSJ1832	14 42 27	10.7	121.7	-3.9		-31.2	-21	7683	No stop
21 57 40	---	14 44 27	10.9	122.1	-3.8		-31.0	99	7714	21 55 41
21 58 10	J1825-0737	14 44 57	13.4	122.9	-3.7		-30.6	7	7714	21 58 10
21 59 10	=1822-076	14 45 57	13.5	123.1	-3.7		-30.5	60	7729	21 58 11
21 59 10	HESSJ1832	14 45 57	11.1	122.5	-3.8		-30.9	-23	7729	No stop
22 01 10	---	14 47 57	11.4	122.9	-3.8		-30.7	97	7760	21 59 11
22 01 40	J1835-1115	14 48 28	9.5	123.4	-3.8		-30.7	9	7760	22 01 40
22 02 40	=1832-113	14 49 28	9.6	123.7	-3.8		-30.6	60	7776	22 01 41

Schedule for TORUN (Code Tr)

Page 6

e-EVN: EM165D

UP: D => Below limits; H => Below horizon mask; W => still slewing at end; blank => Up.

Early: Seconds between end of slew and start. Dwell: On source seconds.

Disk: GBytes recorded to this point.

TPStart: Recording start time. Frequencies are L0 sum (band edge).

SYNC: Time correlator is expected to sync up.

Start UT	Source	Start / Stop					Early	Disk	TPStart	
Stop UT		LST	EL	AZ	HA	UP	ParA	Dwell	GBytes	SYNC

--- Tue 14 May 2024 Day 135 ---										
22 02 40	HESSJ1832	14 49 28	11.5	123.2	-3.7		-30.6	-21	7776	No stop
22 04 40	---	14 51 28	11.8	123.7	-3.7		-30.4	99	7806	22 02 41
22 05 10	J1825-0737	14 51 58	14.2	124.4	-3.6		-30.0	7	7806	22 05 10
22 06 10	=1822-076	14 52 58	14.4	124.7	-3.6		-29.9	60	7822	22 05 11
22 06 10	HESSJ1832	14 52 58	12.0	124.0	-3.7		-30.3	-23	7822	No stop
22 08 10	---	14 54 59	12.2	124.4	-3.7		-30.1	97	7853	22 06 11
22 08 40	J1835-1115	14 55 29	10.3	124.9	-3.7		-30.1	9	7853	22 08 40
22 09 40	=1832-113	14 56 29	10.5	125.2	-3.7		-30.0	60	7868	22 08 41
22 09 40	HESSJ1832	14 56 29	12.4	124.8	-3.6		-30.0	-21	7868	No stop
22 11 40	---	14 58 29	12.7	125.2	-3.6		-29.8	99	7899	22 09 41
22 12 10	J1825-0737	14 58 59	15.1	126.0	-3.5		-29.3	7	7899	22 12 10
22 13 10	=1822-076	14 59 59	15.2	126.2	-3.4		-29.3	60	7915	22 12 11
22 13 10	HESSJ1832	14 59 59	12.8	125.5	-3.6		-29.7	-23	7915	No stop
22 15 10	---	15 02 00	13.1	126.0	-3.5		-29.5	97	7946	22 13 11
22 15 40	J1835-1115	15 02 30	11.2	126.5	-3.6		-29.5	9	7946	22 15 40
22 16 40	=1832-113	15 03 30	11.3	126.7	-3.6		-29.4	60	7961	22 15 41
22 16 40	HESSJ1832	15 03 30	13.3	126.3	-3.5		-29.4	-21	7961	No stop
22 18 40	---	15 05 30	13.5	126.7	-3.5		-29.2	99	7992	22 16 41
22 19 10	J1825-0737	15 06 00	15.9	127.6	-3.3		-28.7	7	7992	22 19 10
22 20 10	=1822-076	15 07 01	16.1	127.8	-3.3		-28.6	60	8007	22 19 11
22 20 10	HESSJ1832	15 07 01	13.7	127.1	-3.5		-29.0	-23	8007	No stop
22 22 10	---	15 09 01	13.9	127.5	-3.4		-28.9	97	8038	22 20 11
22 22 40	J1835-1115	15 09 31	12.0	128.0	-3.5		-28.8	9	8038	22 22 40
22 23 40	=1832-113	15 10 31	12.1	128.2	-3.4		-28.7	60	8054	22 22 41
22 23 40	HESSJ1832	15 10 31	14.1	127.9	-3.4		-28.7	-21	8054	No stop
22 25 40	---	15 12 31	14.3	128.3	-3.4		-28.5	99	8085	22 23 41
22 26 10	J1825-0737	15 13 02	16.8	129.2	-3.2		-28.0	7	8085	22 26 10
22 27 10	=1822-076	15 14 02	16.9	129.4	-3.2		-27.9	60	8100	22 26 11
22 27 10	HESSJ1832	15 14 02	14.5	128.6	-3.3		-28.4	-23	8100	No stop
22 29 10	---	15 16 02	14.8	129.1	-3.3		-28.2	97	8131	22 27 11

Schedule for TORUN (Code Tr)
e-EVN: EM165D

Page 7

UP: D => Below limits; H => Below horizon mask; W => still slewing at end; blank => Up.
Early: Seconds between end of slew and start. Dwell: On source seconds.
Disk: GBytes recorded to this point.
TPStart: Recording start time. Frequencies are L0 sum (band edge).
SYNC: Time correlator is expected to sync up.

Start UT	Source	Start / Stop					Early	Disk	TPStart	
Stop UT		LST	EL	AZ	HA	UP	ParA	Dwell	GBytes	SYNC
--- Tue 14 May 2024 Day 135 ---										
22 29 40	J1835-1115	15 16 32	12.8	129.6	-3.3		-28.2	9	8131	22 29 40
22 30 40	=1832-113	15 17 32	13.0	129.8	-3.3		-28.1	60	8147	22 29 41
22 30 40	HESSJ1832	15 17 32	14.9	129.4	-3.3		-28.0	-21	8147	No stop
22 32 40	---	15 19 33	15.2	129.9	-3.2		-27.8	99	8177	22 30 41
22 33 10	J1825-0737	15 20 03	17.6	130.8	-3.1		-27.3	7	8177	22 33 10
22 34 10	=1822-076	15 21 03	17.7	131.0	-3.1		-27.2	60	8193	22 33 11
22 34 10	HESSJ1832	15 21 03	15.3	130.2	-3.2		-27.7	-23	8193	No stop
22 36 10	---	15 23 03	15.6	130.7	-3.2		-27.5	97	8224	22 34 11
22 36 40	J1835-1115	15 23 33	13.6	131.1	-3.2		-27.5	9	8224	22 36 40
22 37 40	=1832-113	15 24 33	13.8	131.3	-3.2		-27.4	60	8239	22 36 41
22 37 40	HESSJ1832	15 24 33	15.7	131.0	-3.2		-27.3	-21	8239	No stop
22 39 40	---	15 26 34	16.0	131.5	-3.1		-27.1	99	8270	22 37 41
22 40 10	J1825-0737	15 27 04	18.4	132.4	-3.0		-26.6	7	8270	22 40 10
22 41 10	=1822-076	15 28 04	18.5	132.7	-3.0		-26.5	60	8286	22 40 11
22 41 10	HESSJ1832	15 28 04	16.1	131.8	-3.1		-27.0	-23	8286	No stop
22 43 10	---	15 30 04	16.4	132.3	-3.1		-26.8	97	8317	22 41 11
22 43 40	J1835-1115	15 30 34	14.4	132.7	-3.1		-26.7	9	8317	22 43 40
22 44 40	=1832-113	15 31 35	14.5	132.9	-3.1		-26.6	60	8332	22 43 41
22 44 40	HESSJ1832	15 31 35	16.5	132.6	-3.0		-26.6	-21	8332	No stop
22 46 40	---	15 33 35	16.7	133.1	-3.0		-26.4	99	8363	22 44 41
22 47 10	J1825-0737	15 34 05	19.1	134.1	-2.9		-25.8	7	8363	22 47 10
22 48 10	=1822-076	15 35 05	19.2	134.3	-2.9		-25.7	60	8378	22 47 11
22 48 10	HESSJ1832	15 35 05	16.9	133.4	-3.0		-26.2	-23	8378	No stop
22 50 10	---	15 37 06	17.1	133.9	-3.0		-26.0	97	8409	22 48 11
22 50 40	J1835-1115	15 37 36	15.2	134.3	-3.0		-26.0	9	8409	22 50 40
22 51 40	=1832-113	15 38 36	15.3	134.5	-3.0		-25.9	60	8425	22 50 41
22 51 40	HESSJ1832	15 38 36	17.3	134.3	-2.9		-25.8	-21	8425	No stop
22 53 40	---	15 40 36	17.5	134.7	-2.9		-25.6	99	8456	22 51 41
22 54 10	J1825-0737	15 41 06	19.9	135.7	-2.8		-25.0	7	8456	22 54 10
22 55 10	=1822-076	15 42 06	20.0	136.0	-2.7		-24.9	60	8471	22 54 11

Schedule for TORUN (Code Tr)
e-EVN: EM165D

Page 8

UP: D => Below limits; H => Below horizon mask; W => still slewing at end; blank => Up.
Early: Seconds between end of slew and start. Dwell: On source seconds.
Disk: GBytes recorded to this point.
TPStart: Recording start time. Frequencies are L0 sum (band edge).
SYNC: Time correlator is expected to sync up.

Start UT	Source	Start / Stop					Early	Disk	TPStart	
Stop UT		LST	EL	AZ	HA	UP	ParA	Dwell	GBytes	SYNC

--- Tue 14 May 2024 Day 135 ---										
22 55 10	HESSJ1832	15 42 06	17.7	135.1	-2.9		-25.5	-22	8471	No stop
22 57 10	---	15 44 07	17.9	135.5	-2.8		-25.2	98	8502	22 55 11
22 57 40	J1835-1115	15 44 37	15.9	135.9	-2.9		-25.2	9	8502	22 57 40
22 58 40	=1832-113	15 45 37	16.0	136.1	-2.9		-25.1	60	8518	22 57 41
22 58 40	HESSJ1832	15 45 37	18.0	135.9	-2.8		-25.1	-21	8518	No stop
23 00 40	---	15 47 37	18.2	136.4	-2.8		-24.8	99	8548	22 58 41
23 01 10	J1825-0737	15 48 07	20.6	137.4	-2.6		-24.2	7	8548	23 01 10
23 02 10	=1822-076	15 49 07	20.7	137.7	-2.6		-24.1	60	8564	23 01 11
23 03 40	J1751+0939	15 50 38	40.1	139.1	-2.0		-23.5	4	8564	23 03 40
23 07 40	=1749+096	15 54 38	40.5	140.3	-2.0		-22.9	240	8626	23 03 41
23 09 10	J1825-0737	15 56 09	21.4	139.4	-2.5		-23.2	5	8626	23 09 10
23 10 30	=1822-076	15 57 29	21.5	139.7	-2.5		-23.1	80	8646	23 09 11
23 10 30	HESSJ1832	15 57 29	19.2	138.7	-2.6		-23.7	-22	8646	No stop
23 12 30	---	15 59 29	19.4	139.2	-2.6		-23.4	98	8677	23 10 31
23 13 00	J1835-1115	15 59 59	17.5	139.5	-2.6		-23.4	9	8677	23 13 00
23 14 00	=1832-113	16 00 59	17.6	139.7	-2.6		-23.3	60	8693	23 13 01
23 14 00	HESSJ1832	16 00 59	19.6	139.5	-2.6		-23.3	-21	8693	No stop
23 16 00	---	16 03 00	19.8	140.0	-2.5		-23.0	99	8724	23 14 01
23 16 30	J1825-0737	16 03 30	22.1	141.2	-2.4		-22.3	7	8724	23 16 30
23 17 30	=1822-076	16 04 30	22.2	141.4	-2.4		-22.2	60	8739	23 16 31
23 17 30	HESSJ1832	16 04 30	19.9	140.4	-2.5		-22.8	-22	8739	No stop
23 19 30	---	16 06 30	20.1	140.9	-2.5		-22.6	98	8770	23 17 31
23 20 00	J1835-1115	16 07 00	18.2	141.2	-2.5		-22.6	9	8770	23 20 00
23 21 00	=1832-113	16 08 01	18.3	141.4	-2.5		-22.5	60	8785	23 20 01
23 21 00	HESSJ1832	16 08 01	20.3	141.2	-2.4		-22.4	-21	8785	No stop
23 23 00	---	16 10 01	20.4	141.7	-2.4		-22.1	99	8816	23 21 01
23 23 30	J1825-0737	16 10 31	22.8	142.9	-2.3		-21.4	8	8816	23 23 30
23 24 30	=1822-076	16 11 31	22.8	143.2	-2.3		-21.3	60	8832	23 23 31
23 24 30	HESSJ1832	16 11 31	20.6	142.1	-2.4		-22.0	-22	8832	No stop
23 26 30	---	16 13 31	20.8	142.6	-2.3		-21.7	98	8863	23 24 31

Schedule for TORUN (Code Tr)
e-EVN: EM165D

Page 9

UP: D => Below limits; H => Below horizon mask; W => still slewing at end; blank => Up.
Early: Seconds between end of slew and start. Dwell: On source seconds.
Disk: GBytes recorded to this point.
TPStart: Recording start time. Frequencies are L0 sum (band edge).
SYNC: Time correlator is expected to sync up.

Start UT	Source	Start / Stop					Early	Disk	TPStart	
Stop UT		LST	EL	AZ	HA	UP	ParA	Dwell	GBytes	SYNC
--- Tue 14 May 2024 Day 135 ---										
23 27 00	J1835-1115	16 14 02	18.8	142.8	-2.4		-21.7	9	8863	23 27 00
23 28 00	=1832-113	16 15 02	18.9	143.1	-2.4		-21.6	60	8878	23 27 01
23 28 00	HESSJ1832	16 15 02	20.9	143.0	-2.3		-21.5	-21	8878	No stop
23 30 00	---	16 17 02	21.1	143.5	-2.3		-21.2	99	8909	23 28 01
23 30 30	J1825-0737	16 17 32	23.4	144.7	-2.2		-20.5	8	8909	23 30 30
23 31 30	=1822-076	16 18 32	23.5	144.9	-2.1		-20.4	60	8925	23 30 31
23 31 30	HESSJ1832	16 18 32	21.2	143.8	-2.3		-21.1	-22	8925	No stop
23 33 30	---	16 20 33	21.4	144.3	-2.2		-20.8	98	8956	23 31 31
23 34 00	J1835-1115	16 21 03	19.4	144.5	-2.3		-20.8	9	8956	23 34 00
23 35 00	=1832-113	16 22 03	19.5	144.8	-2.2		-20.7	60	8971	23 34 01
23 35 00	HESSJ1832	16 22 03	21.5	144.7	-2.2		-20.6	-21	8971	No stop
23 37 00	---	16 24 03	21.7	145.2	-2.2		-20.3	99	9002	23 35 01
23 37 30	J1825-0737	16 24 33	24.0	146.5	-2.0		-19.5	8	9002	23 37 30
23 38 30	=1822-076	16 25 33	24.1	146.7	-2.0		-19.4	60	9017	23 37 31
23 38 30	HESSJ1832	16 25 33	21.8	145.6	-2.1		-20.1	-22	9017	No stop
23 40 30	---	16 27 34	22.0	146.1	-2.1		-19.9	98	9048	23 38 31
23 41 00	J1835-1115	16 28 04	20.0	146.2	-2.1		-19.9	9	9048	23 41 00
23 42 00	=1832-113	16 29 04	20.1	146.5	-2.1		-19.8	60	9064	23 41 01
23 42 00	HESSJ1832	16 29 04	22.1	146.4	-2.1		-19.7	-21	9064	No stop
23 44 00	---	16 31 04	22.3	147.0	-2.1		-19.4	99	9095	23 42 01
23 44 30	J1825-0737	16 31 34	24.5	148.3	-1.9		-18.6	8	9095	23 44 30
23 45 30	=1822-076	16 32 35	24.6	148.5	-1.9		-18.4	60	9110	23 44 31
23 45 30	HESSJ1832	16 32 35	22.4	147.3	-2.0		-19.2	-22	9110	No stop
23 47 30	---	16 34 35	22.6	147.8	-2.0		-18.9	98	9141	23 45 31
23 48 00	J1835-1115	16 35 05	20.6	148.0	-2.0		-18.9	9	9141	23 48 00
23 49 00	=1832-113	16 36 05	20.7	148.2	-2.0		-18.8	60	9156	23 48 01
23 49 00	HESSJ1832	16 36 05	22.7	148.2	-2.0		-18.7	-21	9156	No stop
23 51 00	---	16 38 06	22.8	148.7	-1.9		-18.4	99	9187	23 49 01
23 51 30	J1825-0737	16 38 36	25.1	150.1	-1.8		-17.6	8	9187	23 51 30
23 52 30	=1822-076	16 39 36	25.2	150.4	-1.8		-17.4	60	9203	23 51 31

Schedule for TORUN (Code Tr)
e-EVN: EM165D

Page 10

UP: D => Below limits; H => Below horizon mask; W => still slewing at end; blank => Up.
Early: Seconds between end of slew and start. Dwell: On source seconds.
Disk: GBytes recorded to this point.
TPStart: Recording start time. Frequencies are L0 sum (band edge).
SYNC: Time correlator is expected to sync up.

Start UT	Source	Start / Stop					Early	Disk	TPStart	
Stop UT		LST	EL	AZ	HA	UP	ParA	Dwell	GBytes	SYNC

--- Tue 14 May 2024 Day 135 ---										
23 52 30	HESSJ1832	16 39 36	23.0	149.1	-1.9		-18.2	-22	9203	No stop
23 54 30	---	16 41 36	23.1	149.6	-1.9		-17.9	98	9234	23 52 31
23 55 00	J1835-1115	16 42 06	21.2	149.7	-1.9		-18.0	9	9234	23 55 00
23 56 00	=1832-113	16 43 06	21.2	150.0	-1.9		-17.8	60	9249	23 55 01
23 56 00	HESSJ1832	16 43 06	23.2	150.0	-1.8		-17.7	-21	9249	No stop
23 58 00	---	16 45 07	23.4	150.5	-1.8		-17.4	99	9280	23 56 01
23 58 30	J1825-0737	16 45 37	25.6	151.9	-1.7		-16.6	8	9280	23 58 30
23 59 30	=1822-076	16 46 37	25.7	152.2	-1.7		-16.4	60	9296	23 58 31
--- Start: Tue 14 May 2024 Day 135 -- Stop: Wed 15 May 2024 Day 136 ---										
23 59 30	HESSJ1832	16 46 37	23.5	150.9	-1.8		-17.2	-22	9296	No stop
00 01 30	---	16 48 37	23.6	151.4	-1.8		-16.9	98	9327	23 59 31
00 02 00	J1835-1115	16 49 07	21.7	151.5	-1.8		-17.0	9	9327	00 02 00
00 03 00	=1832-113	16 50 07	21.7	151.7	-1.8		-16.9	60	9342	00 02 01
00 03 00	HESSJ1832	16 50 07	23.7	151.8	-1.7		-16.7	-21	9342	No stop
00 05 00	---	16 52 08	23.9	152.3	-1.7		-16.4	99	9373	00 03 01
00 05 30	J1825-0737	16 52 38	26.1	153.8	-1.6		-15.5	8	9373	00 05 30
00 06 30	=1822-076	16 53 38	26.1	154.1	-1.6		-15.4	60	9388	00 05 31
00 06 30	HESSJ1832	16 53 38	24.0	152.7	-1.7		-16.2	-22	9388	No stop
00 08 30	---	16 55 38	24.1	153.2	-1.6		-15.9	98	9419	00 06 31
00 09 00	J1835-1115	16 56 08	22.2	153.3	-1.7		-16.0	9	9419	00 09 00
00 10 00	=1832-113	16 57 09	22.2	153.5	-1.7		-15.8	60	9435	00 09 01
00 10 00	HESSJ1832	16 57 09	24.2	153.6	-1.6		-15.7	-21	9435	No stop
00 12 00	---	16 59 09	24.4	154.1	-1.6		-15.4	99	9466	00 10 01
00 12 30	J1825-0737	16 59 39	26.5	155.7	-1.5		-14.4	8	9466	00 12 30
00 13 30	=1822-076	17 00 39	26.6	155.9	-1.4		-14.3	60	9481	00 12 31
00 13 30	HESSJ1832	17 00 39	24.5	154.5	-1.6		-15.2	-22	9481	No stop
00 15 30	---	17 02 40	24.6	155.1	-1.5		-14.9	98	9512	00 13 31
00 16 00	J1835-1115	17 03 10	22.6	155.1	-1.6		-15.0	9	9512	00 16 00
00 17 00	=1832-113	17 04 10	22.7	155.3	-1.5		-14.8	60	9527	00 16 01

Schedule for TORUN (Code Tr)
e-EVN: EM165D

Page 11

UP: D => Below limits; H => Below horizon mask; W => still slewing at end; blank => Up.
Early: Seconds between end of slew and start. Dwell: On source seconds.
Disk: GBytes recorded to this point.
TPStart: Recording start time. Frequencies are L0 sum (band edge).
SYNC: Time correlator is expected to sync up.

Start UT	Source	Start / Stop					Early	Disk	TPStart	
Stop UT		LST	EL	AZ	HA	UP	ParA	Dwell	GBytes	SYNC

--- Wed 15 May 2024 Day 136 ---										
00 17 00	HESSJ1832	17 04 10	24.7	155.5	-1.5		-14.6	-21	9527	No stop
00 19 00	---	17 06 10	24.8	156.0	-1.5		-14.3	99	9558	00 17 01
00 19 30	J1825-0737	17 06 40	26.9	157.6	-1.3		-13.4	8	9558	00 19 30
00 20 30	=1822-076	17 07 40	27.0	157.8	-1.3		-13.2	60	9574	00 19 31
00 20 30	HESSJ1832	17 07 40	24.9	156.4	-1.4		-14.1	-22	9574	No stop
00 22 30	---	17 09 41	25.0	156.9	-1.4		-13.8	98	9605	00 20 31
00 23 00	J1835-1115	17 10 11	23.0	156.9	-1.4		-13.9	9	9605	00 23 00
00 24 00	=1832-113	17 11 11	23.1	157.1	-1.4		-13.8	60	9620	00 23 01
00 24 00	HESSJ1832	17 11 11	25.1	157.3	-1.4		-13.6	-21	9620	No stop
00 26 00	---	17 13 11	25.2	157.8	-1.3		-13.3	99	9651	00 24 01
00 26 30	J1825-0737	17 13 41	27.3	159.5	-1.2		-12.3	8	9651	00 26 30
00 27 30	=1822-076	17 14 41	27.4	159.7	-1.2		-12.1	60	9667	00 26 31
00 27 30	HESSJ1832	17 14 41	25.3	158.2	-1.3		-13.0	-22	9667	No stop
00 29 30	---	17 16 42	25.4	158.8	-1.3		-12.7	98	9698	00 27 31
00 30 00	J1835-1115	17 17 12	23.4	158.7	-1.3		-12.9	9	9698	00 30 00
00 31 00	=1832-113	17 18 12	23.5	159.0	-1.3		-12.7	60	9713	00 30 01
00 31 00	HESSJ1832	17 18 12	25.5	159.2	-1.3		-12.5	-21	9713	No stop
00 33 00	---	17 20 12	25.6	159.7	-1.2		-12.2	99	9744	00 31 01
00 33 30	J1825-0737	17 20 42	27.7	161.4	-1.1		-11.1	8	9744	00 33 30
00 34 30	=1822-076	17 21 43	27.7	161.7	-1.1		-11.0	60	9759	00 33 31
00 36 00	J1751+0939	17 23 13	46.1	169.5	-0.5		-6.4	7	9759	00 36 00
00 40 00	=1749+096	17 27 14	46.2	170.9	-0.4		-5.5	240	9821	00 36 01
00 41 30	J1825-0737	17 28 44	28.0	163.6	-1.0		-9.8	8	9821	00 41 30
00 42 50	=1822-076	17 30 04	28.1	164.0	-0.9		-9.6	80	9842	00 41 31
00 42 50	HESSJ1832	17 30 04	26.1	162.4	-1.1		-10.6	-21	9842	No stop
00 44 50	---	17 32 04	26.2	162.9	-1.0		-10.3	99	9873	00 42 51
00 45 20	J1835-1115	17 32 34	24.2	162.7	-1.1		-10.5	9	9873	00 45 20
00 46 20	=1832-113	17 33 35	24.3	163.0	-1.1		-10.3	60	9888	00 45 21
00 46 20	HESSJ1832	17 33 35	26.2	163.3	-1.0		-10.1	-21	9888	No stop
00 48 20	---	17 35 35	26.3	163.9	-1.0		-9.7	99	9919	00 46 21

Schedule for TORUN (Code Tr)
e-EVN: EM165D

Page 12

UP: D => Below limits; H => Below horizon mask; W => still slewing at end; blank => Up.
Early: Seconds between end of slew and start. Dwell: On source seconds.
Disk: GBytes recorded to this point.
TPStart: Recording start time. Frequencies are L0 sum (band edge).
SYNC: Time correlator is expected to sync up.

Start UT	Source	Start / Stop					Early	Disk	TPStart	
Stop UT		LST	EL	AZ	HA	UP	ParA	Dwell	GBytes	SYNC
--- Wed 15 May 2024 Day 136 ---										
00 48 50	J1825-0737	17 36 05	28.3	165.6	-0.8		-8.6	9	9919	00 48 50
00 49 50	=1822-076	17 37 05	28.4	165.9	-0.8		-8.5	60	9935	00 48 51
00 49 50	HESSJ1832	17 37 05	26.4	164.3	-1.0		-9.5	-21	9935	No stop
00 51 50	---	17 39 05	26.5	164.8	-0.9		-9.2	99	9965	00 49 51
00 52 20	J1835-1115	17 39 36	24.5	164.6	-1.0		-9.4	9	9965	00 52 20
00 53 20	=1832-113	17 40 36	24.5	164.9	-0.9		-9.2	60	9981	00 52 21
00 53 20	HESSJ1832	17 40 36	26.5	165.2	-0.9		-8.9	-21	9981	No stop
00 55 20	---	17 42 36	26.6	165.8	-0.9		-8.6	99	10012	00 53 21
00 55 50	J1825-0737	17 43 06	28.6	167.6	-0.7		-7.5	9	10012	00 55 50
00 56 50	=1822-076	17 44 06	28.6	167.9	-0.7		-7.3	60	10027	00 55 51
00 56 50	HESSJ1832	17 44 06	26.7	166.2	-0.8		-8.4	-21	10027	No stop
00 58 50	---	17 46 07	26.7	166.7	-0.8		-8.0	99	10058	00 56 51
00 59 20	J1835-1115	17 46 37	24.8	166.5	-0.8		-8.2	9	10058	00 59 20
01 00 20	=1832-113	17 47 37	24.8	166.7	-0.8		-8.1	60	10074	00 59 21
01 00 20	HESSJ1832	17 47 37	26.8	167.1	-0.8		-7.8	-21	10074	No stop
01 02 20	---	17 49 37	26.8	167.7	-0.7		-7.5	99	10105	01 00 21
01 02 50	J1825-0737	17 50 07	28.8	169.6	-0.6		-6.3	9	10105	01 02 50
01 03 50	=1822-076	17 51 07	28.8	169.9	-0.6		-6.1	60	10120	01 02 51
01 03 50	HESSJ1832	17 51 07	26.9	168.1	-0.7		-7.2	-21	10120	No stop
01 05 50	---	17 53 08	26.9	168.6	-0.7		-6.9	99	10151	01 03 51
01 06 20	J1835-1115	17 53 38	25.0	168.3	-0.7		-7.1	9	10151	01 06 20
01 07 20	=1832-113	17 54 38	25.0	168.6	-0.7		-6.9	60	10166	01 06 21
01 07 20	HESSJ1832	17 54 38	27.0	169.1	-0.7		-6.6	-21	10166	No stop
01 09 20	---	17 56 38	27.0	169.6	-0.6		-6.3	99	10197	01 07 21
01 09 50	J1825-0737	17 57 08	29.0	171.5	-0.5		-5.1	9	10197	01 09 50
01 10 50	=1822-076	17 58 09	29.0	171.8	-0.5		-4.9	60	10213	01 09 51
01 10 50	HESSJ1832	17 58 09	27.1	170.0	-0.6		-6.0	-21	10213	No stop
01 12 50	---	18 00 09	27.1	170.6	-0.6		-5.7	99	10244	01 10 51
01 13 20	J1835-1115	18 00 39	25.2	170.2	-0.6		-6.0	9	10244	01 13 20
01 14 20	=1832-113	18 01 39	25.2	170.5	-0.6		-5.8	60	10259	01 13 21

Schedule for TORUN (Code Tr)
e-EVN: EM165D

Page 13

UP: D => Below limits; H => Below horizon mask; W => still slewing at end; blank => Up.
Early: Seconds between end of slew and start. Dwell: On source seconds.
Disk: GBytes recorded to this point.
TPStart: Recording start time. Frequencies are L0 sum (band edge).
SYNC: Time correlator is expected to sync up.

Start UT	Source	Start / Stop					Early	Disk	TPStart	
Stop UT		LST	EL	AZ	HA	UP	ParA	Dwell	GBytes	SYNC

--- Wed 15 May 2024 Day 136 ---										
01 14 20	HESSJ1832	18 01 39	27.2	171.0	-0.5		-5.5	-21	10259	No stop
01 16 20	---	18 03 40	27.2	171.5	-0.5		-5.1	99	10290	01 14 21
01 16 50	J1825-0737	18 04 10	29.1	173.5	-0.4		-3.9	9	10290	01 16 50
01 17 50	=1822-076	18 05 10	29.1	173.8	-0.4		-3.7	60	10306	01 16 51
01 17 50	HESSJ1832	18 05 10	27.3	172.0	-0.5		-4.9	-21	10306	No stop
01 19 50	---	18 07 10	27.3	172.5	-0.4		-4.5	99	10336	01 17 51
01 20 20	J1835-1115	18 07 40	25.4	172.1	-0.5		-4.8	9	10336	01 20 20
01 21 20	=1832-113	18 08 40	25.4	172.4	-0.5		-4.6	60	10352	01 20 21
01 21 20	HESSJ1832	18 08 40	27.3	172.9	-0.4		-4.3	-21	10352	No stop
01 23 20	---	18 10 41	27.4	173.5	-0.4		-4.0	99	10383	01 21 21
01 23 50	J1825-0737	18 11 11	29.2	175.5	-0.3		-2.7	9	10383	01 23 50
01 24 50	=1822-076	18 12 11	29.2	175.8	-0.2		-2.5	60	10398	01 23 51
01 24 50	HESSJ1832	18 12 11	27.4	173.9	-0.4		-3.7	-21	10398	No stop
01 26 50	---	18 14 11	27.4	174.5	-0.3		-3.4	99	10429	01 24 51
01 27 20	J1835-1115	18 14 41	25.5	174.0	-0.4		-3.7	9	10429	01 27 20
01 28 20	=1832-113	18 15 41	25.5	174.3	-0.4		-3.5	60	10445	01 27 21
01 28 20	HESSJ1832	18 15 41	27.4	174.9	-0.3		-3.1	-21	10445	No stop
01 30 20	---	18 17 42	27.5	175.4	-0.3		-2.8	99	10476	01 28 21
01 30 50	J1825-0737	18 18 12	29.3	177.5	-0.1		-1.5	9	10476	01 30 50
01 31 50	=1822-076	18 19 12	29.3	177.8	-0.1		-1.3	60	10491	01 30 51
01 31 50	HESSJ1832	18 19 12	27.5	175.9	-0.2		-2.5	-20	10491	No stop
01 33 50	---	18 21 12	27.5	176.4	-0.2		-2.2	100	10522	01 31 51
01 34 20	J1835-1115	18 21 42	25.6	175.9	-0.2		-2.5	9	10522	01 34 20
01 35 20	=1832-113	18 22 43	25.6	176.2	-0.2		-2.3	60	10537	01 34 21
01 35 20	HESSJ1832	18 22 43	27.5	176.8	-0.2		-1.9	-21	10537	No stop
01 37 20	---	18 24 43	27.5	177.4	-0.2		-1.6	99	10568	01 35 21
01 37 50	J1825-0737	18 25 13	29.3	179.5	-0.0		-0.3	10	10568	01 37 50
01 38 50	=1822-076	18 26 13	29.3	179.8	-0.0		-0.1	60	10584	01 37 51
01 38 50	HESSJ1832	18 26 13	27.5	177.8	-0.1		-1.3	-20	10584	No stop
01 40 50	---	18 28 14	27.5	178.4	-0.1		-1.0	100	10615	01 38 51

Schedule for TORUN (Code Tr)
e-EVN: EM165D

Page 14

UP: D => Below limits; H => Below horizon mask; W => still slewing at end; blank => Up.
Early: Seconds between end of slew and start. Dwell: On source seconds.
Disk: GBytes recorded to this point.
TPStart: Recording start time. Frequencies are L0 sum (band edge).
SYNC: Time correlator is expected to sync up.

Start UT	Source	Start / Stop					Early	Disk	TPStart	
Stop UT		LST	EL	AZ	HA	UP	ParA	Dwell	GBytes	SYNC

--- Wed 15 May 2024 Day 136 ---										
01 41 20	J1835-1115	18 28 44	25.6	177.8	-0.1		-1.3	9	10615	01 41 20
01 42 20	=1832-113	18 29 44	25.6	178.1	-0.1		-1.2	60	10630	01 41 21
01 42 20	HESSJ1832	18 29 44	27.5	178.8	-0.1		-0.7	-21	10630	No stop
01 44 20	---	18 31 44	27.6	179.3	-0.0		-0.4	99	10661	01 42 21
01 44 50	J1825-0737	18 32 14	29.3	181.5	0.1		0.9	10	10661	01 44 50
01 45 50	=1822-076	18 33 14	29.3	181.8	0.1		1.1	60	10677	01 44 51
01 45 50	HESSJ1832	18 33 14	27.6	179.8	-0.0		-0.1	-20	10677	No stop
01 47 50	---	18 35 15	27.6	180.3	0.0		0.2	100	10707	01 45 51
01 48 20	J1835-1115	18 35 45	25.7	179.7	-0.0		-0.2	9	10707	01 48 20
01 49 20	=1832-113	18 36 45	25.7	180.0	0.0		0.0	60	10723	01 48 21
01 49 20	HESSJ1832	18 36 45	27.6	180.7	0.0		0.4	-21	10723	No stop
01 51 20	---	18 38 45	27.5	181.3	0.1		0.8	99	10754	01 49 21
01 51 50	J1825-0737	18 39 15	29.2	183.5	0.2		2.1	10	10754	01 51 50
01 52 50	=1822-076	18 40 16	29.2	183.8	0.2		2.3	60	10769	01 51 51
01 52 50	HESSJ1832	18 40 16	27.5	181.7	0.1		1.0	-20	10769	No stop
01 54 50	---	18 42 16	27.5	182.3	0.1		1.4	100	10800	01 52 51
01 55 20	J1835-1115	18 42 46	25.6	181.7	0.1		1.0	9	10800	01 55 20
01 56 20	=1832-113	18 43 46	25.6	181.9	0.1		1.2	60	10816	01 55 21
01 56 20	HESSJ1832	18 43 46	27.5	182.7	0.2		1.6	-21	10816	No stop
01 58 20	---	18 45 46	27.5	183.2	0.2		2.0	99	10847	01 56 21
01 58 50	J1825-0737	18 46 17	29.2	185.5	0.3		3.3	10	10847	01 58 50
01 59 50	=1822-076	18 47 17	29.1	185.8	0.3		3.5	60	10862	01 58 51
01 59 50	HESSJ1832	18 47 17	27.5	183.7	0.2		2.2	-20	10862	No stop
02 01 50	---	18 49 17	27.5	184.2	0.3		2.6	100	10893	01 59 51
02 02 20	J1835-1115	18 49 47	25.6	183.6	0.2		2.2	9	10893	02 02 20
02 03 20	=1832-113	18 50 47	25.6	183.8	0.2		2.3	60	10908	02 02 21
02 03 20	HESSJ1832	18 50 47	27.5	184.6	0.3		2.8	-21	10908	No stop
02 05 20	---	18 52 48	27.4	185.2	0.3		3.2	99	10939	02 03 21
02 05 50	J1825-0737	18 53 18	29.0	187.5	0.4		4.5	10	10939	02 05 50
02 06 50	=1822-076	18 54 18	29.0	187.8	0.5		4.7	60	10955	02 05 51

Schedule for TORUN (Code Tr)
e-EVN: EM165D

Page 15

UP: D => Below limits; H => Below horizon mask; W => still slewing at end; blank => Up.
Early: Seconds between end of slew and start. Dwell: On source seconds.
Disk: GBytes recorded to this point.
TPStart: Recording start time. Frequencies are L0 sum (band edge).
SYNC: Time correlator is expected to sync up.

Start UT	Source	Start / Stop					Early	Disk	TPStart	
Stop UT		LST	EL	AZ	HA	UP	ParA	Dwell	GBytes	SYNC

--- Wed 15 May 2024 Day 136 ---										
02 08 20	J1751+0939	18 55 48	44.7	202.2	1.1		13.3	17	10955	02 08 20
02 12 20	=1749+096	18 59 49	44.5	203.5	1.1		14.1	240	11017	02 08 21
02 20 20	J1825-0737	19 07 50	28.7	191.6	0.7		7.0	408	11017	02 20 20
02 21 40	=1822-076	19 09 10	28.6	191.9	0.7		7.2	80	11037	02 20 21
02 21 40	HESSJ1832	19 09 10	27.1	189.7	0.6		5.9	-19	11037	No stop
02 23 40	---	19 11 11	27.1	190.3	0.6		6.2	101	11068	02 21 41
02 24 10	J1835-1115	19 11 41	25.2	189.5	0.6		5.8	9	11068	02 24 10
02 25 10	=1832-113	19 12 41	25.2	189.8	0.6		6.0	60	11084	02 24 11
02 25 10	HESSJ1832	19 12 41	27.0	190.7	0.6		6.5	-21	11084	No stop
02 27 10	---	19 14 41	27.0	191.2	0.7		6.8	99	11115	02 25 11
02 27 40	J1825-0737	19 15 11	28.4	193.6	0.8		8.2	11	11115	02 27 40
02 28 40	=1822-076	19 16 11	28.4	193.9	0.8		8.4	60	11130	02 27 41
02 28 40	HESSJ1832	19 16 11	26.9	191.7	0.7		7.1	-19	11130	No stop
02 30 40	---	19 18 12	26.9	192.2	0.7		7.4	101	11161	02 28 41
02 31 10	J1835-1115	19 18 42	25.0	191.4	0.7		6.9	9	11161	02 31 10
02 32 10	=1832-113	19 19 42	25.0	191.6	0.7		7.1	60	11176	02 31 11
02 32 10	HESSJ1832	19 19 42	26.8	192.6	0.8		7.6	-20	11176	No stop
02 34 10	---	19 21 42	26.7	193.2	0.8		8.0	100	11207	02 32 11
02 34 40	J1825-0737	19 22 12	28.2	195.6	0.9		9.4	11	11207	02 34 40
02 35 40	=1822-076	19 23 13	28.1	195.8	0.9		9.5	60	11223	02 34 41
02 35 40	HESSJ1832	19 23 13	26.7	193.6	0.8		8.2	-19	11223	No stop
02 37 40	---	19 25 13	26.6	194.1	0.9		8.5	101	11254	02 35 41
02 38 10	J1835-1115	19 25 43	24.8	193.3	0.8		8.1	10	11254	02 38 10
02 39 10	=1832-113	19 26 43	24.8	193.5	0.8		8.2	60	11269	02 38 11
02 39 10	HESSJ1832	19 26 43	26.6	194.5	0.9		8.8	-20	11269	No stop
02 41 10	---	19 28 43	26.5	195.1	0.9		9.1	100	11300	02 39 11
02 41 40	J1825-0737	19 29 14	27.9	197.5	1.0		10.5	11	11300	02 41 40
02 42 40	=1822-076	19 30 14	27.8	197.8	1.1		10.7	60	11315	02 41 41
02 42 40	HESSJ1832	19 30 14	26.4	195.5	0.9		9.4	-19	11315	No stop
02 44 40	---	19 32 14	26.3	196.0	1.0		9.7	101	11346	02 42 41

Schedule for TORUN (Code Tr)
e-EVN: EM165D

Page 16

UP: D => Below limits; H => Below horizon mask; W => still slewing at end; blank => Up.
Early: Seconds between end of slew and start. Dwell: On source seconds.
Disk: GBytes recorded to this point.
TPStart: Recording start time. Frequencies are L0 sum (band edge).
SYNC: Time correlator is expected to sync up.

Start UT	Source	Start / Stop				Early	Disk	TPStart		
Stop UT		LST	EL	AZ	HA	UP	ParA	Dwell	GBytes	SYNC

--- Wed 15 May 2024 Day 136 ---										
02 45 10	J1835-1115	19 32 44	24.5	195.1	0.9		9.2	10	11346	02 45 10
02 46 10	=1832-113	19 33 44	24.5	195.4	1.0		9.4	60	11362	02 45 11
02 46 10	HESSJ1832	19 33 44	26.3	196.4	1.0		9.9	-20	11362	No stop
02 48 10	---	19 35 45	26.2	197.0	1.0		10.2	100	11393	02 46 11
02 48 40	J1825-0737	19 36 15	27.5	199.4	1.2		11.6	11	11393	02 48 40
02 49 40	=1822-076	19 37 15	27.5	199.7	1.2		11.8	60	11408	02 48 41
02 49 40	HESSJ1832	19 37 15	26.1	197.4	1.1		10.5	-19	11408	No stop
02 51 40	---	19 39 15	26.0	197.9	1.1		10.8	101	11439	02 49 41
02 52 10	J1835-1115	19 39 45	24.3	197.0	1.1		10.3	10	11439	02 52 10
02 53 10	=1832-113	19 40 45	24.2	197.3	1.1		10.5	60	11455	02 52 11
02 53 10	HESSJ1832	19 40 45	26.0	198.3	1.1		11.0	-20	11455	No stop
02 55 10	---	19 42 46	25.9	198.9	1.1		11.4	100	11486	02 53 11
02 55 40	J1825-0737	19 43 16	27.2	201.4	1.3		12.7	11	11486	02 55 40
02 56 40	=1822-076	19 44 16	27.1	201.6	1.3		12.9	60	11501	02 55 41
02 56 40	HESSJ1832	19 44 16	25.8	199.3	1.2		11.6	-18	11501	No stop
02 58 40	---	19 46 16	25.7	199.8	1.2		11.9	102	11532	02 56 41
02 59 10	J1835-1115	19 46 46	23.9	198.8	1.2		11.4	10	11532	02 59 10
03 00 10	=1832-113	19 47 47	23.9	199.1	1.2		11.6	60	11547	02 59 11
03 00 10	HESSJ1832	19 47 47	25.6	200.2	1.2		12.1	-20	11547	No stop
03 02 10	---	19 49 47	25.5	200.8	1.3		12.5	100	11578	03 00 11
03 02 40	J1825-0737	19 50 17	26.8	203.3	1.4		13.8	11	11578	03 02 40
03 03 40	=1822-076	19 51 17	26.7	203.5	1.4		14.0	60	11594	03 02 41
03 03 40	HESSJ1832	19 51 17	25.4	201.2	1.3		12.7	-19	11594	No stop
03 05 40	---	19 53 17	25.3	201.7	1.3		13.0	101	11625	03 03 41
03 06 10	J1835-1115	19 53 48	23.6	200.7	1.3		12.5	10	11625	03 06 10
03 07 10	=1832-113	19 54 48	23.5	200.9	1.3		12.6	60	11640	03 06 11
03 07 10	HESSJ1832	19 54 48	25.2	202.1	1.3		13.2	-20	11640	No stop
03 09 10	---	19 56 48	25.1	202.6	1.4		13.5	100	11671	03 07 11
03 09 40	J1825-0737	19 57 18	26.3	205.1	1.5		14.9	11	11671	03 09 40
03 10 40	=1822-076	19 58 18	26.3	205.4	1.5		15.1	60	11686	03 09 41

Schedule for TORUN (Code Tr)
e-EVN: EM165D

Page 17

UP: D => Below limits; H => Below horizon mask; W => still slewing at end; blank => Up.
Early: Seconds between end of slew and start. Dwell: On source seconds.
Disk: GBytes recorded to this point.
TPStart: Recording start time. Frequencies are L0 sum (band edge).
SYNC: Time correlator is expected to sync up.

Start UT	Source	Start / Stop				Early	Disk	TPStart		
Stop UT		LST	EL	AZ	HA	UP	ParA	Dwell	GBytes	SYNC
--- Wed 15 May 2024 Day 136 ---										
03 10 40	HESSJ1832	19 58 18	25.0	203.0	1.4		13.8	-19	11686	No stop
03 12 40	---	20 00 19	24.9	203.6	1.4		14.1	101	11717	03 10 41
03 13 10	J1835-1115	20 00 49	23.2	202.5	1.4		13.6	10	11717	03 13 10
03 14 10	=1832-113	20 01 49	23.1	202.8	1.4		13.7	60	11733	03 13 11
03 14 10	HESSJ1832	20 01 49	24.8	204.0	1.5		14.3	-20	11733	No stop
03 16 10	---	20 03 49	24.7	204.5	1.5		14.6	100	11764	03 14 11
03 16 40	J1825-0737	20 04 19	25.9	207.0	1.6		16.0	11	11764	03 16 40
03 17 40	=1822-076	20 05 19	25.8	207.3	1.6		16.1	60	11779	03 16 41
03 17 40	HESSJ1832	20 05 19	24.6	204.9	1.5		14.8	-19	11779	No stop
03 19 40	---	20 07 20	24.5	205.4	1.6		15.1	101	11810	03 17 41
03 20 10	J1835-1115	20 07 50	22.8	204.3	1.5		14.6	10	11810	03 20 10
03 21 10	=1832-113	20 08 50	22.7	204.6	1.5		14.8	60	11826	03 20 11
03 21 10	HESSJ1832	20 08 50	24.4	205.8	1.6		15.4	-20	11826	No stop
03 23 10	---	20 10 50	24.2	206.3	1.6		15.7	100	11857	03 21 11
03 23 40	J1825-0737	20 11 20	25.4	208.9	1.7		17.0	11	11857	03 23 40
03 24 40	=1822-076	20 12 21	25.3	209.1	1.8		17.1	60	11872	03 23 41
03 24 40	HESSJ1832	20 12 21	24.1	206.7	1.6		15.9	-19	11872	No stop
03 26 40	---	20 14 21	24.0	207.2	1.7		16.2	101	11903	03 24 41
03 27 10	J1835-1115	20 14 51	22.3	206.1	1.6		15.6	10	11903	03 27 10
03 28 10	=1832-113	20 15 51	22.3	206.4	1.7		15.8	60	11918	03 27 11
03 28 10	HESSJ1832	20 15 51	23.9	207.6	1.7		16.4	-20	11918	No stop
03 30 10	---	20 17 52	23.8	208.1	1.7		16.7	100	11949	03 28 11
03 30 40	J1825-0737	20 18 22	24.9	210.7	1.9		18.0	11	11949	03 30 40
03 31 40	=1822-076	20 19 22	24.8	210.9	1.9		18.2	60	11965	03 30 41
03 31 40	HESSJ1832	20 19 22	23.7	208.5	1.8		16.9	-19	11965	No stop
03 33 40	---	20 21 22	23.5	209.0	1.8		17.2	101	11996	03 31 41
03 34 10	J1835-1115	20 21 52	21.8	207.9	1.8		16.7	10	11996	03 34 10
03 35 10	=1832-113	20 22 52	21.8	208.2	1.8		16.8	60	12011	03 34 11
03 35 10	HESSJ1832	20 22 52	23.4	209.4	1.8		17.4	-20	12011	No stop
03 37 10	---	20 24 53	23.2	209.9	1.8		17.7	100	12042	03 35 11

Schedule for TORUN (Code Tr)
e-EVN: EM165D

Page 18

UP: D => Below limits; H => Below horizon mask; W => still slewing at end; blank => Up.
Early: Seconds between end of slew and start. Dwell: On source seconds.
Disk: GBytes recorded to this point.
TPStart: Recording start time. Frequencies are L0 sum (band edge).
SYNC: Time correlator is expected to sync up.

Start UT	Source	Start / Stop					Early	Disk	TPStart	
Stop UT		LST	EL	AZ	HA	UP	ParA	Dwell	GBytes	SYNC

--- Wed 15 May 2024 Day 136 ---										
03 37 40	J1825-0737	20 25 23	24.3	212.5	2.0		19.0	11	12042	03 37 40
03 38 40	=1822-076	20 26 23	24.2	212.8	2.0		19.1	60	12057	03 37 41
03 38 40	HESSJ1832	20 26 23	23.1	210.3	1.9		17.9	-19	12057	No stop
03 40 40	---	20 28 23	23.0	210.8	1.9		18.2	101	12088	03 38 41
03 41 10	J1835-1115	20 28 53	21.3	209.7	1.9		17.6	10	12088	03 41 10
03 42 10	=1832-113	20 29 53	21.3	209.9	1.9		17.8	60	12104	03 41 11
03 42 10	HESSJ1832	20 29 53	22.9	211.2	1.9		18.4	-20	12104	No stop
03 44 10	---	20 31 54	22.7	211.7	2.0		18.7	100	12135	03 42 11
03 44 40	J1825-0737	20 32 24	23.7	214.3	2.1		20.0	11	12135	03 44 40
03 45 40	=1822-076	20 33 24	23.6	214.5	2.1		20.1	60	12150	03 44 41
03 47 10	J1751+0939	20 34 54	35.7	232.1	2.7		28.7	31	12150	03 47 10
03 51 10	=1749+096	20 38 55	35.2	233.2	2.8		29.2	240	12212	03 47 11
03 52 40	J1825-0737	20 40 25	23.0	216.3	2.2		21.0	31	12212	03 52 40
03 54 00	=1822-076	20 41 45	22.9	216.7	2.2		21.2	80	12233	03 52 41
03 54 00	HESSJ1832	20 41 45	21.9	214.2	2.1		20.0	-19	12233	No stop
03 56 00	---	20 43 46	21.7	214.7	2.2		20.3	101	12264	03 54 01
03 56 30	J1835-1115	20 44 16	20.1	213.5	2.1		19.7	10	12264	03 56 30
03 57 30	=1832-113	20 45 16	20.0	213.7	2.1		19.9	60	12279	03 56 31
03 57 30	HESSJ1832	20 45 16	21.6	215.1	2.2		20.5	-19	12279	No stop
03 59 30	---	20 47 16	21.4	215.6	2.2		20.7	101	12310	03 57 31
04 00 00	J1825-0737	20 47 46	22.4	218.2	2.3		22.0	11	12310	04 00 00
04 01 00	=1822-076	20 48 47	22.3	218.4	2.4		22.1	60	12325	04 00 01
04 01 00	HESSJ1832	20 48 47	21.3	216.0	2.2		20.9	-19	12325	No stop
04 03 00	---	20 50 47	21.1	216.4	2.3		21.2	101	12356	04 01 01
04 03 30	J1835-1115	20 51 17	19.5	215.2	2.2		20.7	11	12356	04 03 30
04 04 30	=1832-113	20 52 17	19.4	215.5	2.3		20.8	60	12372	04 03 31
04 04 30	HESSJ1832	20 52 17	21.0	216.8	2.3		21.4	-19	12372	No stop
04 06 30	---	20 54 17	20.8	217.3	2.3		21.6	101	12403	04 04 31
04 07 00	J1825-0737	20 54 48	21.7	219.9	2.5		22.9	11	12403	04 07 00
04 08 00	=1822-076	20 55 48	21.6	220.1	2.5		23.0	60	12418	04 07 01

Schedule for TORUN (Code Tr)
e-EVN: EM165D

Page 19

UP: D => Below limits; H => Below horizon mask; W => still slewing at end; blank => Up.
Early: Seconds between end of slew and start. Dwell: On source seconds.
Disk: GBytes recorded to this point.
TPStart: Recording start time. Frequencies are L0 sum (band edge).
SYNC: Time correlator is expected to sync up.

Start UT	Source	Start / Stop					Early	Disk	TPStart	
Stop UT		LST	EL	AZ	HA	UP	ParA	Dwell	GBytes	SYNC
--- Wed 15 May 2024 Day 136 ---										
04 08 00	HESSJ1832	20 55 48	20.7	217.7	2.4		21.8	-19	12418	No stop
04 10 00	---	20 57 48	20.5	218.2	2.4		22.1	101	12449	04 08 01
04 10 30	J1835-1115	20 58 18	18.9	216.9	2.4		21.6	11	12449	04 10 30
04 11 30	=1832-113	20 59 18	18.8	217.2	2.4		21.7	60	12465	04 10 31
04 11 30	HESSJ1832	20 59 18	20.3	218.5	2.4		22.3	-19	12465	No stop
04 13 30	---	21 01 19	20.2	219.0	2.5		22.5	101	12495	04 11 31
04 14 00	J1825-0737	21 01 49	21.0	221.6	2.6		23.7	11	12495	04 14 00
04 15 00	=1822-076	21 02 49	20.9	221.9	2.6		23.8	60	12511	04 14 01
04 15 00	HESSJ1832	21 02 49	20.0	219.4	2.5		22.7	-19	12511	No stop
04 17 00	---	21 04 49	19.8	219.9	2.5		23.0	101	12542	04 15 01
04 17 30	J1835-1115	21 05 19	18.3	218.6	2.5		22.5	11	12542	04 17 30
04 18 30	=1832-113	21 06 19	18.2	218.8	2.5		22.6	60	12557	04 17 31
04 18 30	HESSJ1832	21 06 19	19.7	220.2	2.5		23.1	-19	12557	No stop
04 20 30	---	21 08 20	19.5	220.7	2.6		23.4	101	12588	04 18 31
04 21 00	J1825-0737	21 08 50	20.3	223.3	2.7		24.6	11	12588	04 21 00
04 22 00	=1822-076	21 09 50	20.2	223.5	2.7		24.7	60	12604	04 21 01
04 22 00	HESSJ1832	21 09 50	19.3	221.1	2.6		23.6	-19	12604	No stop
04 24 00	---	21 11 50	19.1	221.6	2.6		23.8	101	12635	04 22 01
04 24 30	J1835-1115	21 12 20	17.6	220.3	2.6		23.3	11	12635	04 24 30
04 25 30	=1832-113	21 13 21	17.5	220.5	2.6		23.4	60	12650	04 24 31
04 25 30	HESSJ1832	21 13 21	19.0	221.9	2.7		24.0	-19	12650	No stop
04 27 30	---	21 15 21	18.8	222.4	2.7		24.2	101	12681	04 25 31
04 28 00	J1825-0737	21 15 51	19.6	225.0	2.8		25.4	11	12681	04 28 00
04 29 00	=1822-076	21 16 51	19.5	225.2	2.8		25.5	60	12696	04 28 01
04 29 00	HESSJ1832	21 16 51	18.6	222.8	2.7		24.4	-19	12696	No stop
04 31 00	---	21 18 51	18.4	223.2	2.7		24.6	101	12727	04 29 01
04 31 30	J1835-1115	21 19 22	16.9	221.9	2.7		24.1	11	12727	04 31 30
04 32 30	=1832-113	21 20 22	16.8	222.1	2.7		24.3	60	12743	04 31 31
04 32 30	HESSJ1832	21 20 22	18.3	223.6	2.8		24.8	-19	12743	No stop
04 34 30	---	21 22 22	18.1	224.1	2.8		25.0	101	12774	04 32 31

Schedule for TORUN (Code Tr)
e-EVN: EM165D

Page 20

UP: D => Below limits; H => Below horizon mask; W => still slewing at end; blank => Up.
Early: Seconds between end of slew and start. Dwell: On source seconds.
Disk: GBytes recorded to this point.
TPStart: Recording start time. Frequencies are L0 sum (band edge).
SYNC: Time correlator is expected to sync up.

Start UT	Source	Start / Stop					Early	Disk	TPStart	
Stop UT		LST	EL	AZ	HA	UP	ParA	Dwell	GBytes	SYNC
--- Wed 15 May 2024 Day 136 ---										
04 35 00	J1825-0737	21 22 52	18.8	226.6	2.9		26.1	11	12774	04 35 00
04 36 00	=1822-076	21 23 52	18.7	226.9	2.9		26.2	60	12789	04 35 01
04 36 00	HESSJ1832	21 23 52	17.9	224.4	2.8		25.2	-19	12789	No stop
04 38 00	---	21 25 53	17.7	224.9	2.9		25.4	101	12820	04 36 01
04 38 30	J1835-1115	21 26 23	16.2	223.5	2.8		24.9	11	12820	04 38 30
04 39 30	=1832-113	21 27 23	16.1	223.8	2.8		25.1	60	12836	04 38 31
04 39 30	HESSJ1832	21 27 23	17.5	225.2	2.9		25.6	-19	12836	No stop
04 41 30	---	21 29 23	17.3	225.7	2.9		25.8	101	12866	04 39 31
04 42 00	J1825-0737	21 29 53	18.0	228.3	3.0		26.9	11	12866	04 42 00
04 43 00	=1822-076	21 30 53	17.9	228.5	3.1		27.0	60	12882	04 42 01
04 43 00	HESSJ1832	21 30 53	17.2	226.0	2.9		26.0	-19	12882	No stop
04 45 00	---	21 32 54	16.9	226.5	3.0		26.2	101	12913	04 43 01
04 45 30	J1835-1115	21 33 24	15.5	225.2	2.9		25.7	11	12913	04 45 30
04 46 30	=1832-113	21 34 24	15.3	225.4	3.0		25.8	60	12928	04 45 31
04 46 30	HESSJ1832	21 34 24	16.8	226.9	3.0		26.4	-19	12928	No stop
04 48 30	---	21 36 24	16.5	227.3	3.0		26.6	101	12959	04 46 31
04 49 00	J1825-0737	21 36 54	17.2	229.9	3.2		27.6	11	12959	04 49 00
04 50 00	=1822-076	21 37 55	17.1	230.1	3.2		27.7	60	12975	04 49 01
04 50 00	HESSJ1832	21 37 55	16.4	227.7	3.1		26.7	-19	12975	No stop
04 52 00	---	21 39 55	16.2	228.1	3.1		26.9	101	13006	04 50 01
04 52 30	J1835-1115	21 40 25	14.7	226.8	3.1		26.5	11	13006	04 52 30
04 53 30	=1832-113	21 41 25	14.6	227.0	3.1		26.6	60	13021	04 52 31
04 53 30	HESSJ1832	21 41 25	16.0	228.5	3.1		27.1	-19	13021	No stop
04 55 30	---	21 43 26	15.8	228.9	3.2		27.3	101	13052	04 53 31
04 56 00	J1825-0737	21 43 56	16.4	231.5	3.3		28.3	11	13052	04 56 00
04 57 00	=1822-076	21 44 56	16.3	231.7	3.3		28.4	60	13067	04 56 01
04 57 00	HESSJ1832	21 44 56	15.6	229.3	3.2		27.5	-19	13067	No stop
04 59 00	---	21 46 56	15.4	229.7	3.2		27.7	101	13098	04 57 01
04 59 30	J1835-1115	21 47 26	13.9	228.3	3.2		27.2	11	13098	04 59 30
05 00 30	=1832-113	21 48 26	13.8	228.6	3.2		27.3	60	13114	04 59 31

Schedule for TORUN (Code Tr)
e-EVN: EM165D

Page 21

UP: D => Below limits; H => Below horizon mask; W => still slewing at end; blank => Up.
Early: Seconds between end of slew and start. Dwell: On source seconds.
Disk: GBytes recorded to this point.
TPStart: Recording start time. Frequencies are L0 sum (band edge).
SYNC: Time correlator is expected to sync up.

Start UT	Source	Start / Stop					Early	Disk	TPStart	
Stop UT		LST	EL	AZ	HA	UP	ParA	Dwell	GBytes	SYNC

--- Wed 15 May 2024 Day 136 ---										
05 00 30	HESSJ1832	21 48 26	15.2	230.1	3.2		27.8	-18	13114	No stop
05 02 30	---	21 50 27	15.0	230.5	3.3		28.0	102	13145	05 00 31
05 03 00	J1825-0737	21 50 57	15.6	233.1	3.4		29.0	11	13145	05 03 00
05 04 00	=1822-076	21 51 57	15.5	233.3	3.4		29.1	60	13160	05 03 01
05 04 00	HESSJ1832	21 51 57	14.8	230.9	3.3		28.2	-19	13160	No stop
05 06 00	---	21 53 57	14.6	231.3	3.3		28.4	101	13191	05 04 01
05 06 30	J1835-1115	21 54 27	13.1	229.9	3.3		27.9	11	13191	05 06 30
05 07 30	=1832-113	21 55 27	13.0	230.1	3.3		28.0	60	13207	05 06 31
05 07 30	HESSJ1832	21 55 27	14.4	231.6	3.4		28.5	-18	13207	No stop
05 09 30	---	21 57 28	14.1	232.1	3.4		28.7	102	13237	05 07 31
05 10 00	J1825-0737	21 57 58	14.7	234.7	3.5		29.6	11	13237	05 10 00
05 11 00	=1822-076	21 58 58	14.6	234.9	3.5		29.7	60	13253	05 10 01
05 11 00	HESSJ1832	21 58 58	14.0	232.4	3.4		28.8	-19	13253	No stop
05 13 00	---	22 00 58	13.7	232.9	3.4		29.0	101	13284	05 11 01
05 13 30	J1835-1115	22 01 28	12.3	231.5	3.4		28.6	11	13284	05 13 30
05 14 30	=1832-113	22 02 29	12.2	231.7	3.4		28.7	60	13299	05 13 31
05 14 30	HESSJ1832	22 02 29	13.5	233.2	3.5		29.2	-18	13299	No stop
05 16 30	---	22 04 29	13.3	233.7	3.5		29.4	102	13330	05 14 31
05 17 00	J1825-0737	22 04 59	13.9	236.2	3.6		30.2	11	13330	05 17 00
05 18 00	=1822-076	22 05 59	13.7	236.4	3.7		30.3	60	13346	05 17 01
05 19 30	J1751+0939	22 07 29	23.3	254.3	4.2		35.9	40	13346	05 19 30
05 23 30	=1749+096	22 11 30	22.8	255.1	4.3		36.1	240	13408	05 19 31
05 25 00	J1825-0737	22 13 00	12.9	238.0	3.8		30.9	39	13408	05 25 00
05 26 00	=1822-076	22 14 01	12.7	238.2	3.8		31.0	60	13423	05 25 01
05 26 00	HESSJ1832	22 14 01	12.1	235.7	3.7		30.2	-19	13423	No stop
05 28 00	---	22 16 01	11.9	236.2	3.7		30.4	101	13454	05 26 01
05 28 30	J1835-1115	22 16 31	10.5	234.8	3.7		30.0	12	13454	05 28 30
05 30 00	=1832-113	22 18 01	10.3	235.1	3.7		30.1	90	13477	05 28 31

SETUP FILE INFORMATION:

NOTE: If DOPPLER, FREQ, or BW were used, see the individual scans for the final BBC settings.

1st LO=	4200.00	4200.00	4200.00	4200.00	4200.00	4200.00	4200.00	4200.00	4200.00
	4200.00	4200.00	4200.00	4200.00	4200.00	4200.00	4200.00	4200.00	4200.00
Net SB=	L	L	U	U	L	L	U	U	U
	L	L	U	U	L	L	U	U	U
IF SB =	U	U	U	U	U	U	U	U	U
	U	U	U	U	U	U	U	U	U
Pol. =	RCP	LCP	RCP	LCP	RCP	LCP	RCP	LCP	LCP
	RCP	LCP	RCP	LCP	RCP	LCP	RCP	LCP	LCP
BBC =	1	9	1	9	2	10	2	10	10
	3	11	3	11	4	12	4	12	12
BBC SB=	L	L	U	U	L	L	U	U	U
	L	L	U	U	L	L	U	U	U
IF =	A1	B1	A1	B1	A1	B1	A1	B1	B1
	A1	B1	A1	B1	A1	B1	A1	B1	B1

The following frequency sets based on these setups were used.

Frequency Set: 6 Setup file default. Used with PCAL = off

LO sum=	4830.49	4830.49	4830.49	4830.49	4894.49	4894.49	4894.49	4894.49
	4958.49	4958.49	4958.49	4958.49	5022.49	5022.49	5022.49	5022.49
BBC fr=	630.49	630.49	630.49	630.49	694.49	694.49	694.49	694.49
	758.49	758.49	758.49	758.49	822.49	822.49	822.49	822.49
Bandwd=	32.00	32.00	32.00	32.00	32.00	32.00	32.00	32.00
	32.00	32.00	32.00	32.00	32.00	32.00	32.00	32.00

Matching frequency sets: 6

Track assignments are:

track1= 1, 2, 3, 4, 5, 6, 7, 8, 9, 10, 11, 12, 13, 14, 15, 16

barrel=roll_off

POSITIONS OF SOURCES USED IN RECORDING SCANS

Source	Source position (RA/Dec) (B1950)	(J2000)	(Date)	Error (mas)
* HESSJ1832	18 30 00.427854	* 18 32 45.154000	18 34 06.064637	0.00
	-09 24 11.40884	*-09 21 54.60000	-09 20 55.05134	0.00
1832-113	18 32 32.599242	* 18 35 19.575787	18 36 41.574763	0.15
* J1835-1115	-11 18 27.18008	*-11 15 59.31285	-11 14 53.83385	0.26
	rfc_2023c Petrov and Kovalev, in preparation 848 observations			
1822-076	18 22 54.910249	* 18 25 37.609542	18 26 57.560822	0.11
* J1825-0737	-07 39 15.96747	*-07 37 30.01355	-07 36 45.99539	0.15
	rfc_2023c Petrov and Kovalev, in preparation 1862 observations			
0552+398	05 52 01.407168	* 05 55 30.805611	05 57 11.035153	0.00
* J0555+3948	39 48 21.94581	* 39 48 49.16496	39 49 08.82468	0.00
DA193	/home/guest/rmc/SCHED/sched11.6/catalogs/sources.gsfc			
J0555+39	GSFC 2016a X/S astro solution, 415688 observations.			
OJ287	08 51 57.250615	* 08 54 48.874927	08 56 11.905576	0.00
* J0854+2006	20 17 58.41740	* 20 06 30.64085	20 01 01.81526	0.00
0851+202	/home/guest/rmc/SCHED/sched11.6/catalogs/sources.gsfc			
J0854+20	GSFC 2016a X/S astro solution, 270807 observations.			
4C39.25	09 23 55.319216	* 09 27 03.013937	09 28 34.083429	0.31
* J0927+3902	39 15 23.56644	* 39 02 20.85185	38 56 11.74201	0.16
0923+392	/home/guest/rmc/SCHED/sched11.6/catalogs/sources.gsfc			

J0927+39	GSFC 2016a X/S astro solution, 250526 observations.			
1222+216	12 22 23.408719	* 12 24 54.458404	12 26 08.828362	0.05
* J1224+2122	21 39 23.03695	* 21 22 46.38856	21 14 42.93822	0.09
J1224+21	/home/guest/rmc/SCHED/sched11.6/catalogs/sources.gsfc GSFC 2016a X/S astro solution, 386 observations.			
1611+343	16 11 47.914252	* 16 13 41.064243	16 14 37.727536	0.13
* J1613+3412	34 20 19.83388	* 34 12 47.90890	34 08 57.89877	0.16
J1613+34	/home/guest/rmc/SCHED/sched11.6/catalogs/sources.gsfc GSFC 2016a X/S astro solution, 162031 observations.			
1749+096	17 49 10.387930	* 17 51 32.818574	17 52 43.070594	0.00
* J1751+0939	09 39 42.82586	* 09 39 00.72841	09 38 28.85962	0.00
J1751+09	/home/guest/rmc/SCHED/sched11.6/catalogs/sources.gsfc GSFC 2016a X/S astro solution, 192391 observations.			

Contents

Graphical Plan of Experiments in May 2024	1
Experiment Listing	3
em165dtr – e-EVN: EM165D	5